



SHRADER & MARTINEZ
CONSTRUCTION USA, LLC

Construction Communicator

WINTER 2024



President's Corner

THINK SAFETY, ACT SAFELY

Safety is at the forefront of every single one of our jobsites. Each day we strive to send our employees and subcontractors' employees home safely. The challenge is constant; we know that accidents can and will happen, for a variety of reasons. Potential hazards exist on all jobsites, but it is the job of our superintendents, project managers, and management to identify and mitigate these hazards.

One of our clients utilizes the services of a third-party company to manage risks, including contractor pre-qualification. A recent update they provided led with an eye-popping statistic that a worker loses their life to a workplace injury every 90 minutes. Various studies have shown that a high proportion of incidents result from inexperience; 43% of injuries involve workers with less than 5 years of experience. Complacency can also be an issue, as very experienced workers can often become desensitized to the dangers

present. Fatigue from working long hours is also a significant risk factor, one which is sometimes difficult to manage.

Much information is available, but what can be done, practically, to minimize and ultimately prevent workplace accidents? At SMC, we have taken numerous steps over the years to enhance our safety program. Most importantly was the creation of a robust Safety Committee, consisting of members from both field and office staffs. Safety committees have always been part of our company but have not always been active and effective. More recently, we have empowered our Safety Committee to enhance safety education and improve awareness of potential hazards, especially related to our construction projects. The committee conducts monthly "touch base" Teams meetings with the entire operations team. These meetings have been instrumental in keeping everyone more focused and aware on a day-to-day basis.

We are constantly improving our processes in other ways as well. Our safety practices have been reviewed and our safety manuals audited for compliance with stringent guidelines expected of us. Jobsite safety audits

are routinely conducted by our safety consultants and the loss prevention team from our insurance carrier. Any potential deficiencies and recommendations are reviewed and discussed with all superintendents. In addition, we now employ a full-time safety manager responsible for managing our safety program. Each of these steps individually contribute to a safer environment; collectively, they are creating a culture.

Continued on next page

WHO WE ARE

Shrader & Martinez Construction "SMC" was founded in 1986 by industry experts Ronald Martinez and Scott Shrader. Headquartered in Sedona, Arizona, SMC specializes in nationwide commercial tenant improvements and ground-up construction for retail, food service, showrooms, and a range of commercial environments. RRAM Services, a division of SMC, is a nationwide remodel, repair, and maintenance company. With 24/7 services and a single point of contact, RRAM provides local, qualified vendors for services ranging from a single repair to full remodels for retail, restaurants, warehouses, and offices.



Performance. Innovation. Partnership.

PRESIDENT'S CORNER, CONT.

Continued from previous page

We are very proud to have completed 2023 with zero reportable instances; everyone at SMC deserves kudos for this accomplishment. However, this does not allow us to take the focus off our safety program. As National Transportation Safety Board chairwoman, Jennifer Homendy, stated recently, “The absence of a fatality or an accident doesn’t mean the presence of safety.” Although this can be true, it can also be said that the presence of safety is likely to reduce the incidence of accidents. I believe this to be the case for our success in 2023.

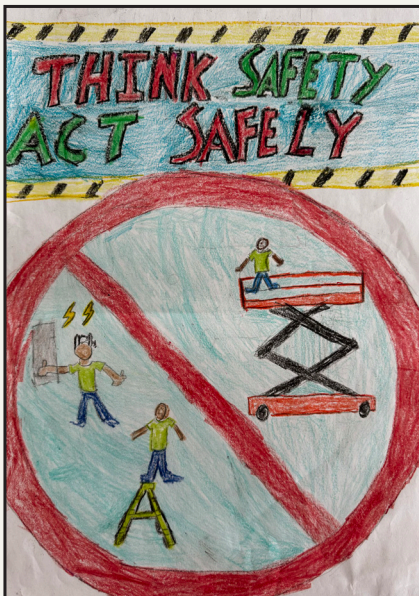
Below is one additional fun component of our safety program, the announcement of the 2024 Safety Poster Contest winner, Bristol Schiesser. Congratulations Bristol, and thanks for reminding us that we all need to “Think Safety, Act Safely!”

Dennis Hill, President

2024 Safety Poster Contest

This year’s safety poster contest grand prize winner is 12-year-old Bristol Schiesser, granddaughter of job site superintendent, Floyd Johnson! Bristol’s winning design is a great display of this year’s theme “Think Safety, Act Safely” and will hang on all our job sites to continually serve as a reminder to keep our projects safe and free from accidents.

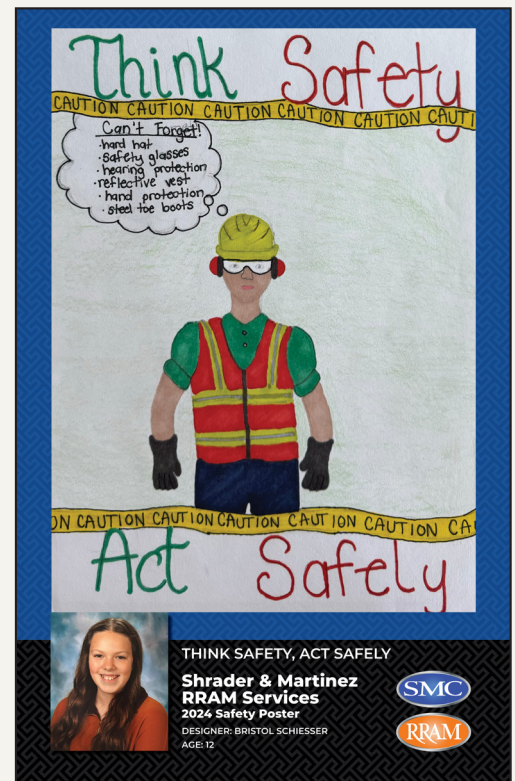
Many thanks to those who participated in this year’s safety poster contest! We received fantastic entries in each age group. Some other notable entries from this year:



Brooks Schuster, age 6
1st place winner, age group 4-6



Bensyn Mandelke, age 7
1st place winner, age group 7-9



Bristol Schiesser, age 12
Grand prize winner & 1st place winner, age group 10-12

Project Feature: Shake Shack, Las Vegas, Nevada



This North Las Vegas Shake Shack location is a prototype of Shake Shack's expanding drive thru store format, which is being built in suburban locations throughout the United States.

In the middle of 2023 they had only six drive thru restaurants, with a goal of having 20 open for business by year end. As with most prototypes, design changes often occur during construction, as well

as plan changes that escalate costs and the timeline to build. Nationally, the average time of construction for a new drive through is 12 to 15 months. The SMC team was able to get this Shake Shack project completed in well under that!

This required the site work and infrastructure work to run concurrently with the building construction, so it was a busy site! Ideally we would

build the site to virtual completion before starting the building.

The challenges were met with coordination from the SMC project team of Nick Pavletic and Curt Garner and the onsite supervision of Bill Haynes delivering a terrific completed project in just over 10 months.



Get to Know SMC & RRAM

We think it is important to know who you're working with, so we would like you to "get to know" some of SMC's and RRAM's finest.



JOHN LOUDERBACK – SAFETY MANAGER

John is currently the safety manager for both SMC and Elder-Jones, and has worked at SMC since October of 2019. He got started at SMC as an assistant project manager. In that role, he worked mostly on Amazon projects. In his current role, what he does is applicable to all projects. However, he is specifically responsible for maintaining SMC's safety compliance with Amazon and is grateful to have the continuing exposure to Amazon as a client. That work has not only been personally challenging for him, but it has moved SMC quite far along in their safety procedures and policies.

John was born in Philadelphia, Pennsylvania, and spent most of his childhood there. From his teenage years until 2018 he resided in southern New Jersey. During that time, he graduated from Wildwood Catholic High School, went off to college for a bit, married his wife Kathleen, and had three wonderful children. In 1990, they bought his wife's family's food business, which they operated successfully for 30 years. Interestingly, that was John's introduction to safety. Even in the food business, you still do job hazard analysis and develop safety plans!

John currently resides in the Village of Oak Creek, Arizona, just south of Sedona. Outside of work, he enjoys hiking, music, classic cars of any kind, and most of all spending time with his family. John also owns seven guitars, but can still play only one at a time!

JACK TATUM – FIELD SUPERINTENDENT

Jack has worked as a field superintendent for SMC for nearly 16 years. He has done projects for a number of clients, including Grout, Pandora, and Ben Bridge. A couple projects that stand out for him are the dining hall on the campus of Bowling Green State University in Ohio and a pharmaceutical kitchen remodel in Albany, New York.

Jack grew up in Southern California and went to La Habra High School. He currently lives in Deatsville, Alabama, on Lake Jordan. In his spare time, he enjoys unwinding on his back deck that overlooks the lake, and all the other fun the lake has to offer, including fishing, water skiing, and jet skiing. He also spends a lot of time at his shop where he works on his old cars and truck.





SIERRA BENSON – ASSISTANT PROJECT MANAGER, RRAM SERVICES

Sierra has worked at RRAM Services for over five years, and is currently an assistant project manager. She primarily works on projects with Charles Schwab, Warby Parker, and Ben Bridge. Sierra's favorite project was a Ms. Pac-Man arcade game machine repair for Warby Parker in Portland, Oregon. It was an unusual and fun work order, and a challenge that they were able to take care of for the client.

Sierra is an only child, and was raised in the Pacific Northwest. She graduated high school in Centralia, Washington, and went on to complete cosmetology school. She currently lives in Texas.

In her free time, Sierra enjoys photography, baking, sewing, reading, hiking, and sightseeing.

GEORGE MITCHELL – FIELD SUPERINTENDENT

George has been with SMC for a year and a half, working as a field superintendent. He brings 35 years of experience building restaurants, fuel stations, and medical facilities. Since joining SMC, he has primarily worked on projects at John Wayne Airport in Orange County, California. These projects have been interesting for George with all the airport security and approval processes required to move the projects forward. But John Wayne Airport is a special place for George as it is where he trained and gained his certificate to pilot aircraft, and has over 300 landings there.

He grew up in Huntington Beach, California, and was educated within Southern California. He continues to reside in Huntington Beach with his wife and family. They enjoy traveling internationally, nationally, snow skiing, and beach activities.



SMC & RRAM Across the Nation

Recently completed projects from around the country.



LULULEMON Albuquerque, NM
Superintendent: Tyler Hensley
Project Manager: Ryan Lynch



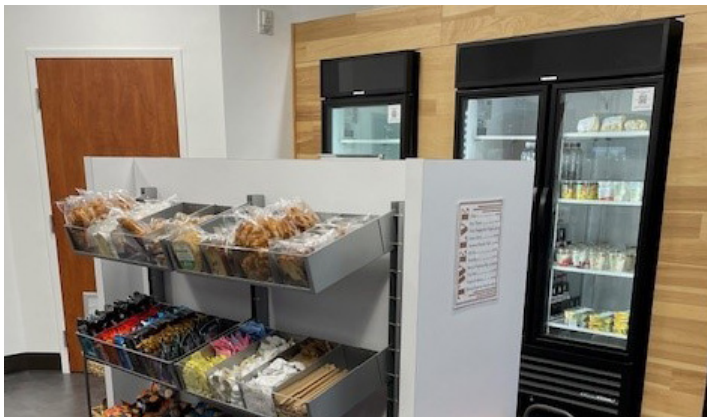
RAILS Austin, TX
Superintendent: Jack Tatum
Project Manager: Nick Pavletic



BARNES & NOBLE Marina Del Rey, CA
Superintendent: Bob Coon
Project Manager: Drew Hirsch



SAGEBROOK HOME World Market Center | Las Vegas, NV
Superintendent: Tristan Yorek
Project Manager: Josh Hill



LOUNGE12 Downey, CA
Superintendent: Kelly Nielsen
Project Manager: Donnie Jackson



LULULEMON Edina, MN
Superintendent: John Healy
Project Manager: Drew Hirsch



SOFTMOC Overland Park, KS
Superintendent: Scott Sparks
Project Manager: Ryan Lynch



ROWE FINE FURNITURE World Market Center | Las Vegas, NV
Superintendent: Merle Louck
Project Manager: Josh Hill



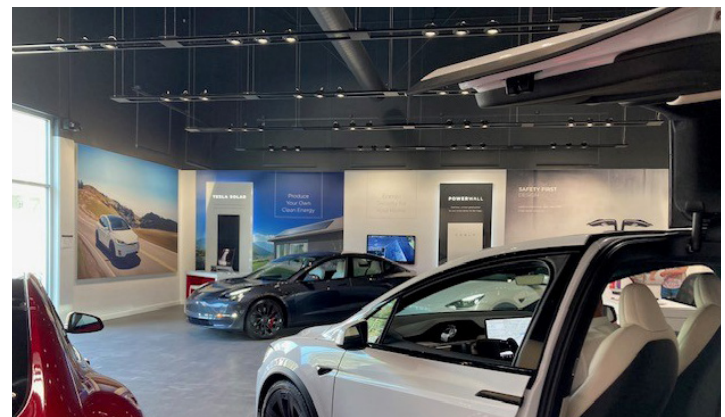
BEST BUY Greenfield, WI
Superintendent: Troy Williams
Project Manager: Drew Hirsch



GREENLEAF John Wayne Airport | Santa Ana, CA
Superintendents: Derek Jackson & Jesus Morales
Project Manager: Donnie Jackson



TESLA Lisle, IL
RRAM | Window tinting
Project Manager: Alisha Van Den Hul



TESLA Bellevue, WA
RRAM | Paint refresh
Project Manager: Alisha Van Den Hul

Taking Time for Office Fun



Garrett Carlson, Troy & Sylvia Coke, Sierra Benson, Alisha Van Den Hul & Kathy Kelly in their fabulous costumes

This year on Halloween we had a BBQ lunch and costume contest at the SMC and RRAM Services offices. Management grilled burgers and brats, and lots of employees brought fixings and sides. We had beautiful weather for having lunch and playing bags outside, and employees were super creative with their costumes! Sierra Benson took home the win in the costume contest!



Costume contest winner, Sierra Benson!

We recently had our 2nd Annual Chili Cook-Off with our office employees. There were seven batches of chili to choose from that ranged from mild to spicy, different meats, lots of beans (much to the chagrin of a couple of people), and all were delicious! And of course we had all the fixings: cheese, onions, sour cream, and we couldn't forget the cornbread!

We learned quite a lot from last year, so this year we actually had tasting cups that were numbered, so everyone could taste a few bites of each chili, vote on their favorite, and then go back for their favorites! The weather was perfect again, for us to eat chili and have a staff meeting outside. Troy Coke took home the treasured trophy for his winning chili!



Chili cook-off winner, Troy Coke!

Shrader & Martinez Construction Contacts:

DENNIS HILL

President

dhill@shradermartinez.com

952-250-3117

GREG LUCIVANSKY

Vice President, Project Development

gregl@elderjones.com

952-345-6058

KATHY KELLY

Director, RRAM Services

kkelly@rramservices.com

928-963-3369

BRIE GUNDERSON

Marketing Director

bgunderson@shradermartinez.com

952-345-6028

GENERAL INFORMATION

Shrader & Martinez Construction USA, LLC

160 Dry Creek Road

Sedona, AZ 86336

Phone: 928-282-7554 | Fax: 928-852-3730

www.shradermartinez.com

LET'S GET SOCIAL! CONNECT WITH US:



https://twitter.com/smc_gc_retail



<https://www.facebook.com/shrader.martinez.construction>



<https://www.linkedin.com/company/shrader-&-martinez-construction-inc>

